

Living As A Body: Practically

Luke 14:25-33, Romans 12:1, John 3:16-17, Mark 16:15

Recap Of Our Series

We Count The Cost Of Following Jesus

Luke 14:25-33



We Live Sacrificially In The Church

Romans 12:1



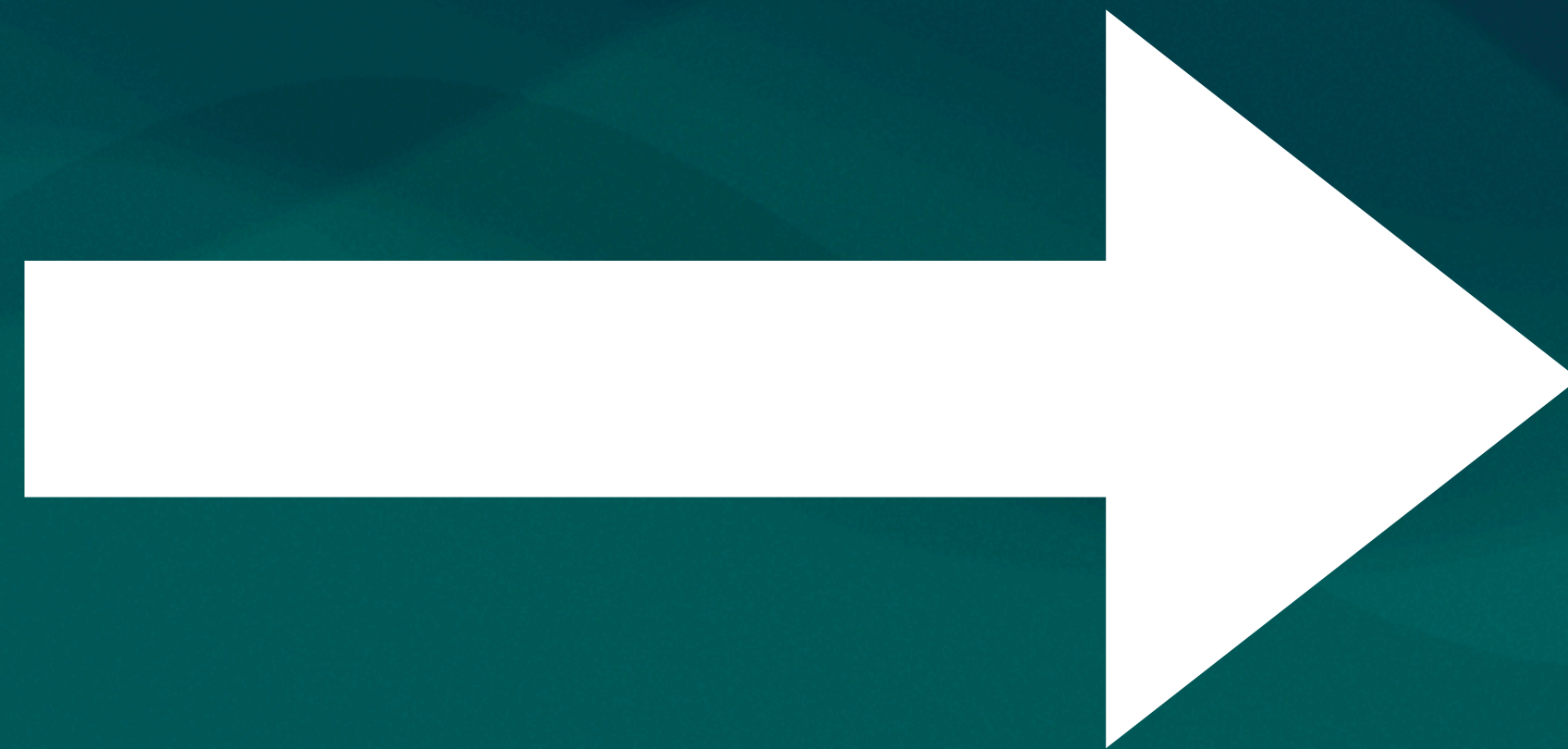
We Want To Love The World Like God Does

John 3:16-17



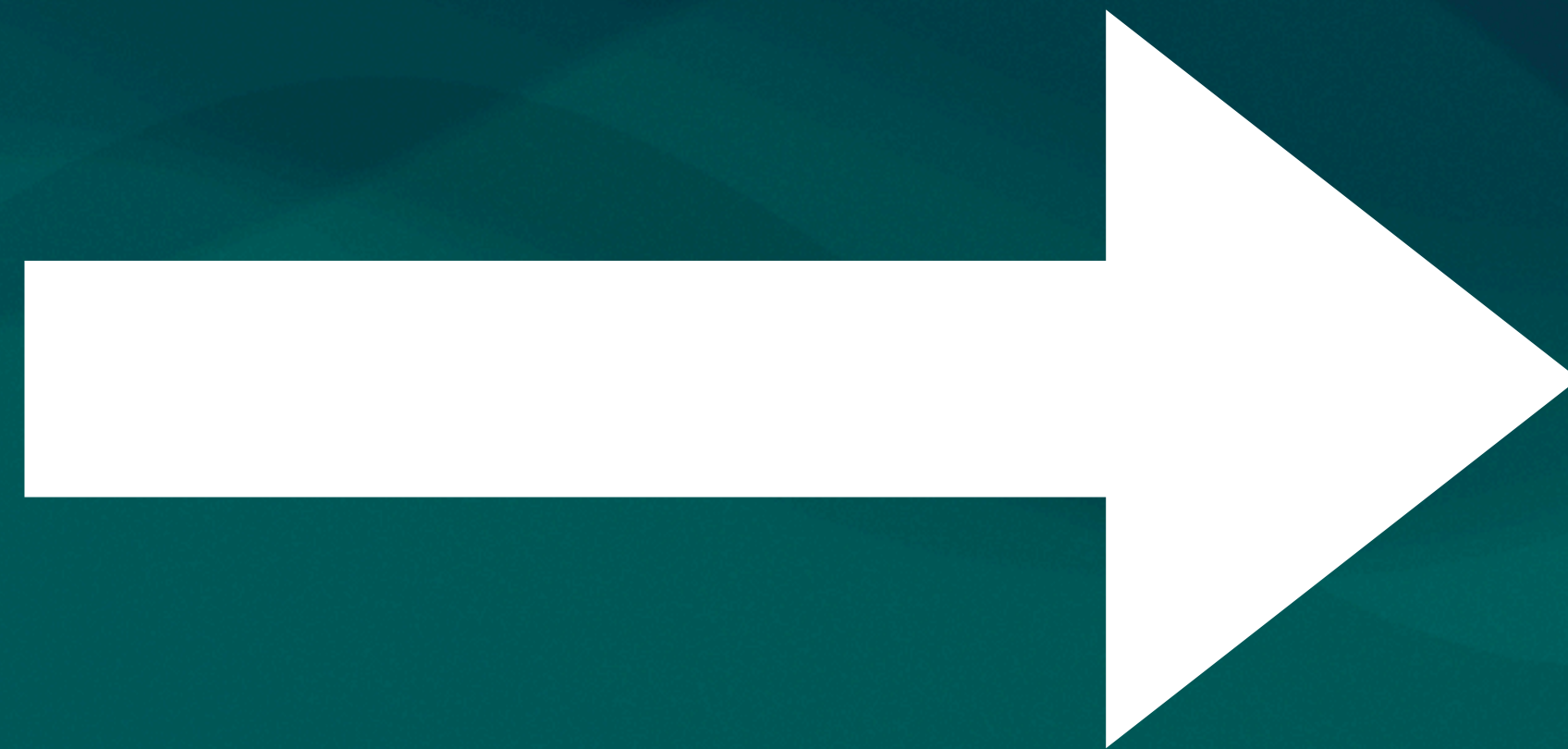
This Compels Us To Preach The Gospel

Mark 16:15



God Works, People Are Saved

Ephesians 2:8-9



They Are Added To The Church & Disciplined

Matthew 28:19-20, Acts 2:40-41



God Is At Work!

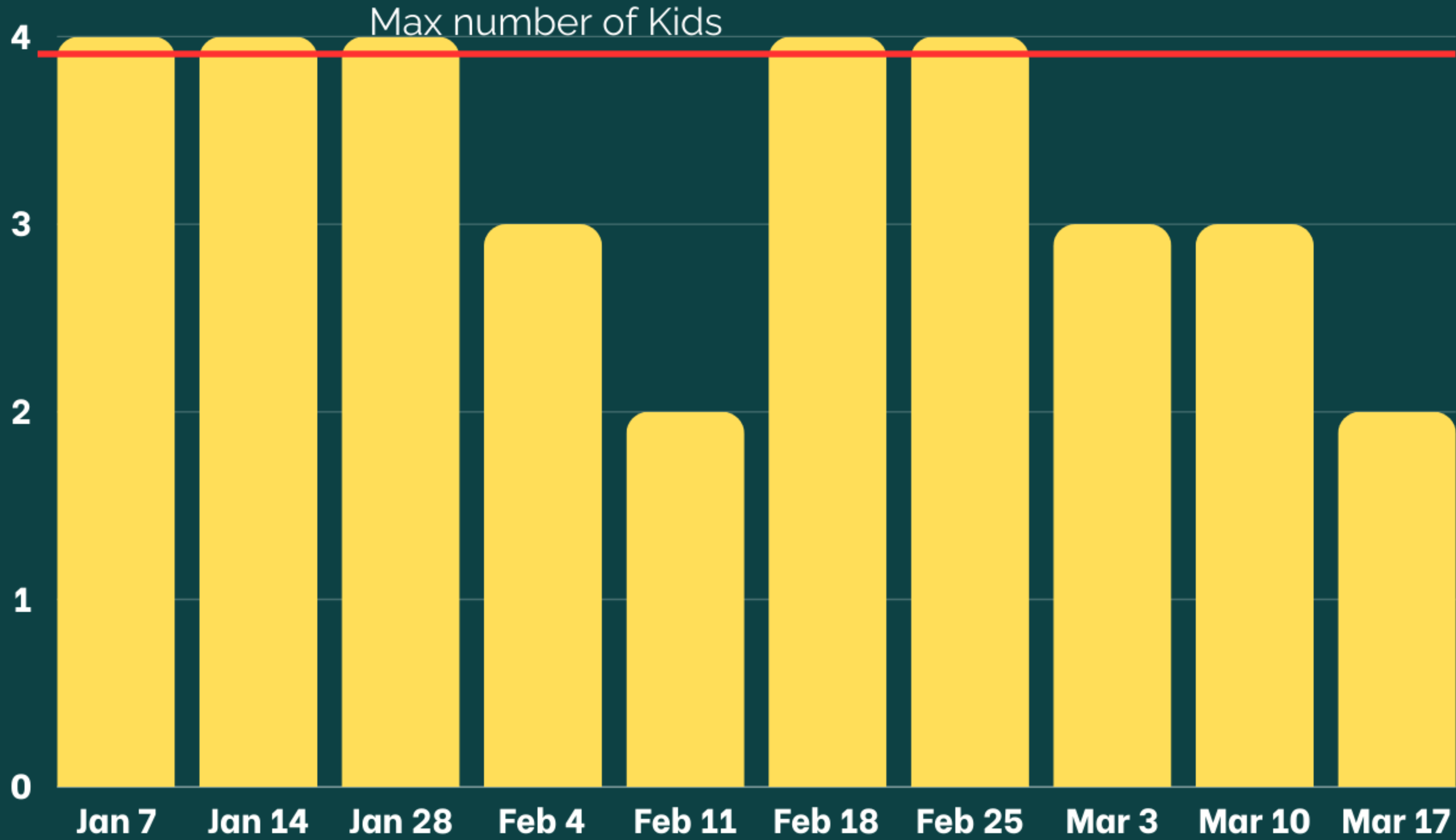
**This Has Created THE BEST
Problems**

Problem #1

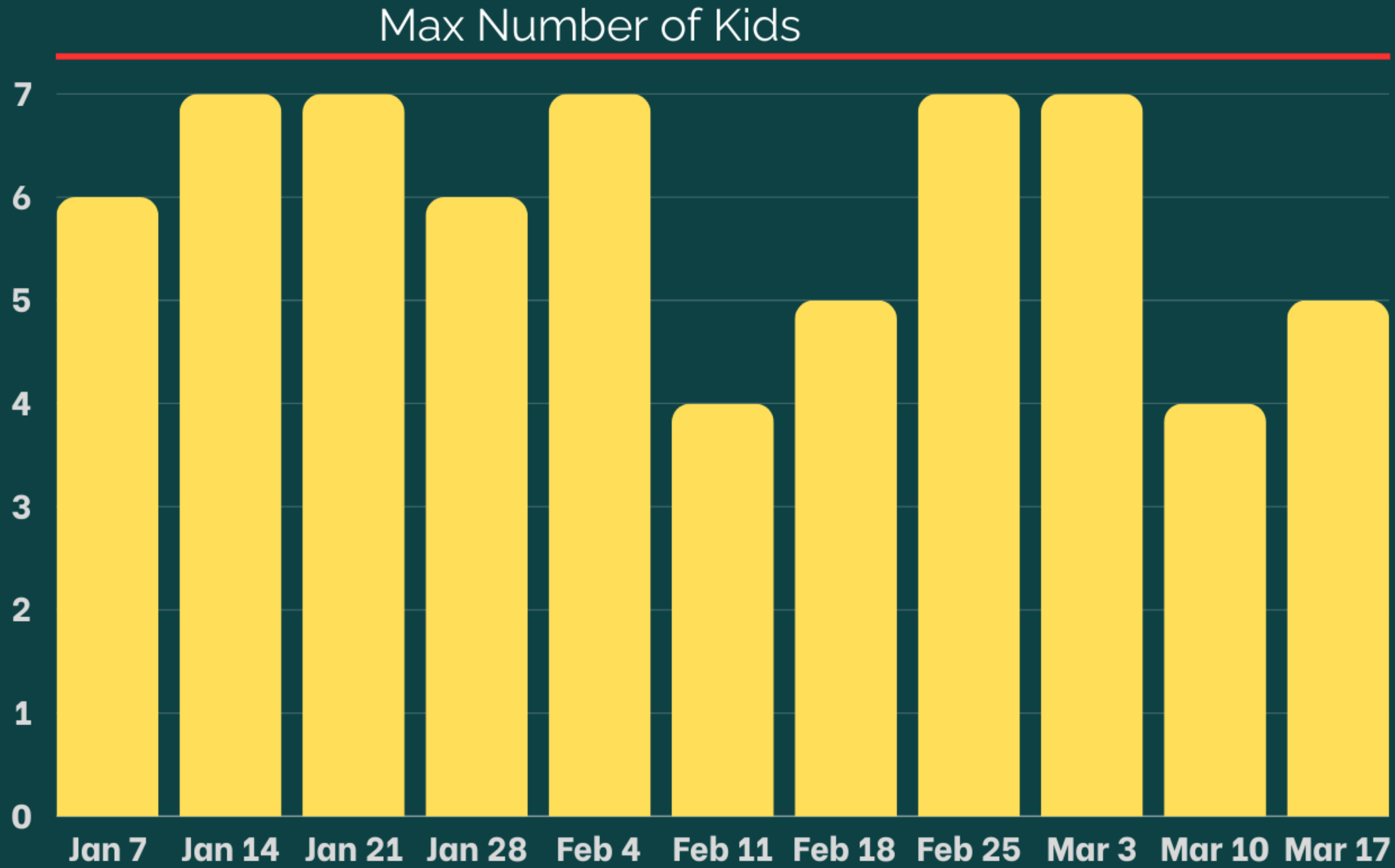
Our Children's Ministry Is Full

**Close To Full =
Not Much Room To Grow**

Children in Nursery



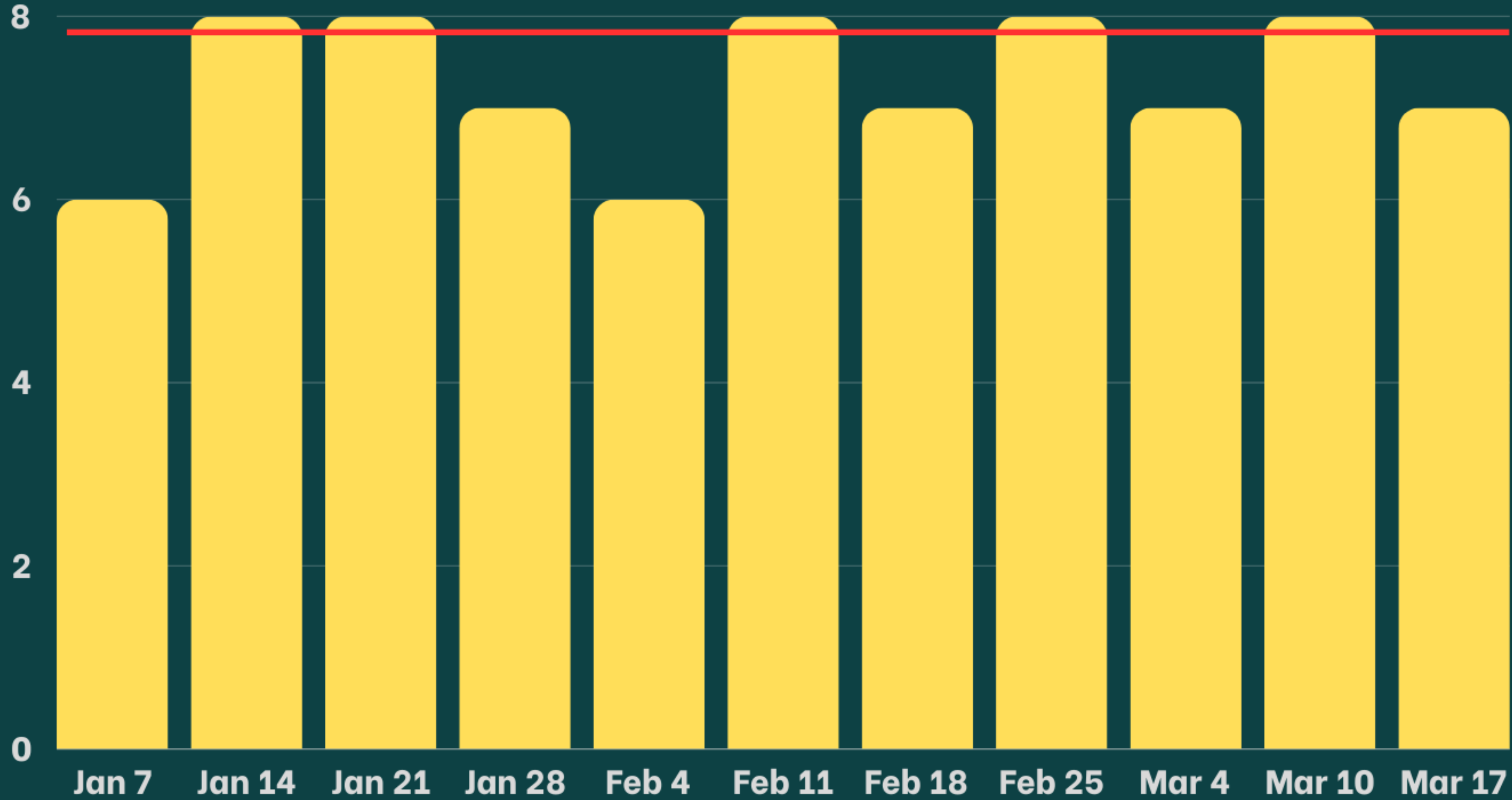
Children in Toddler's Classroom



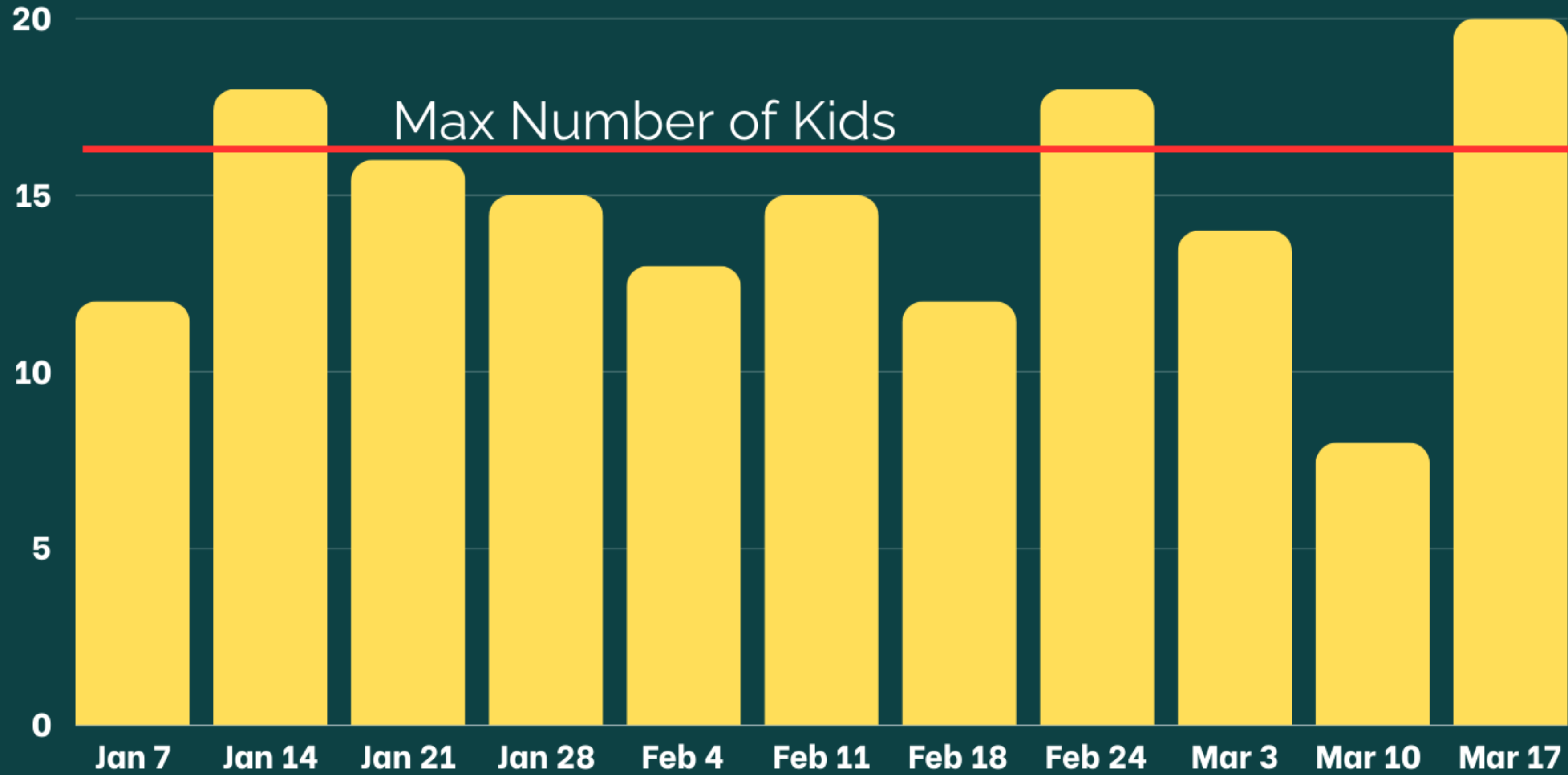
Children in Preschool Classroom



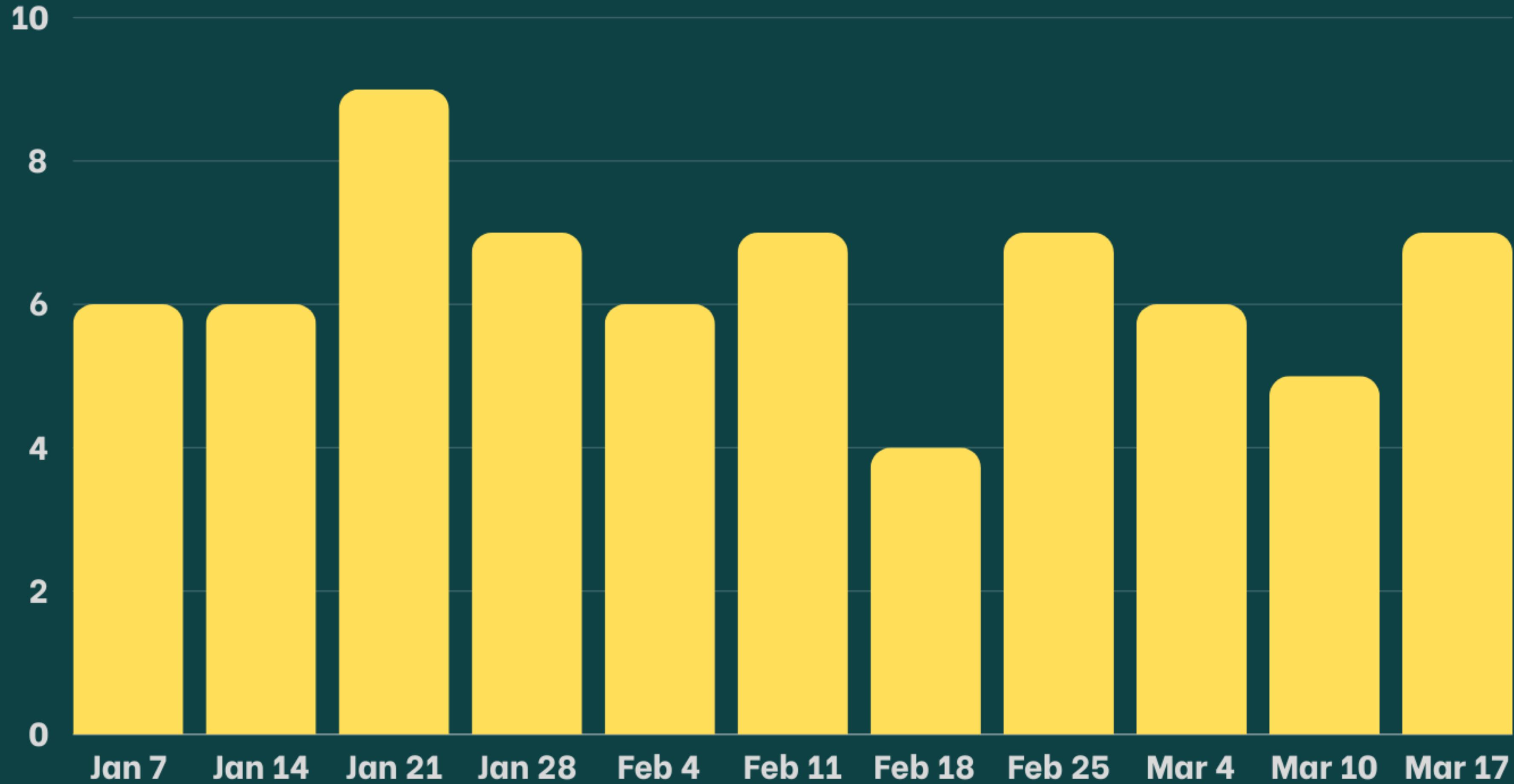
Max Number of Kids



Number of Kids in SK-Grade 2 Classroom



Number of Kids in Grade 3-5 Classroom



Problem #2

**Our 1st Service Is Approaching
Full**

151

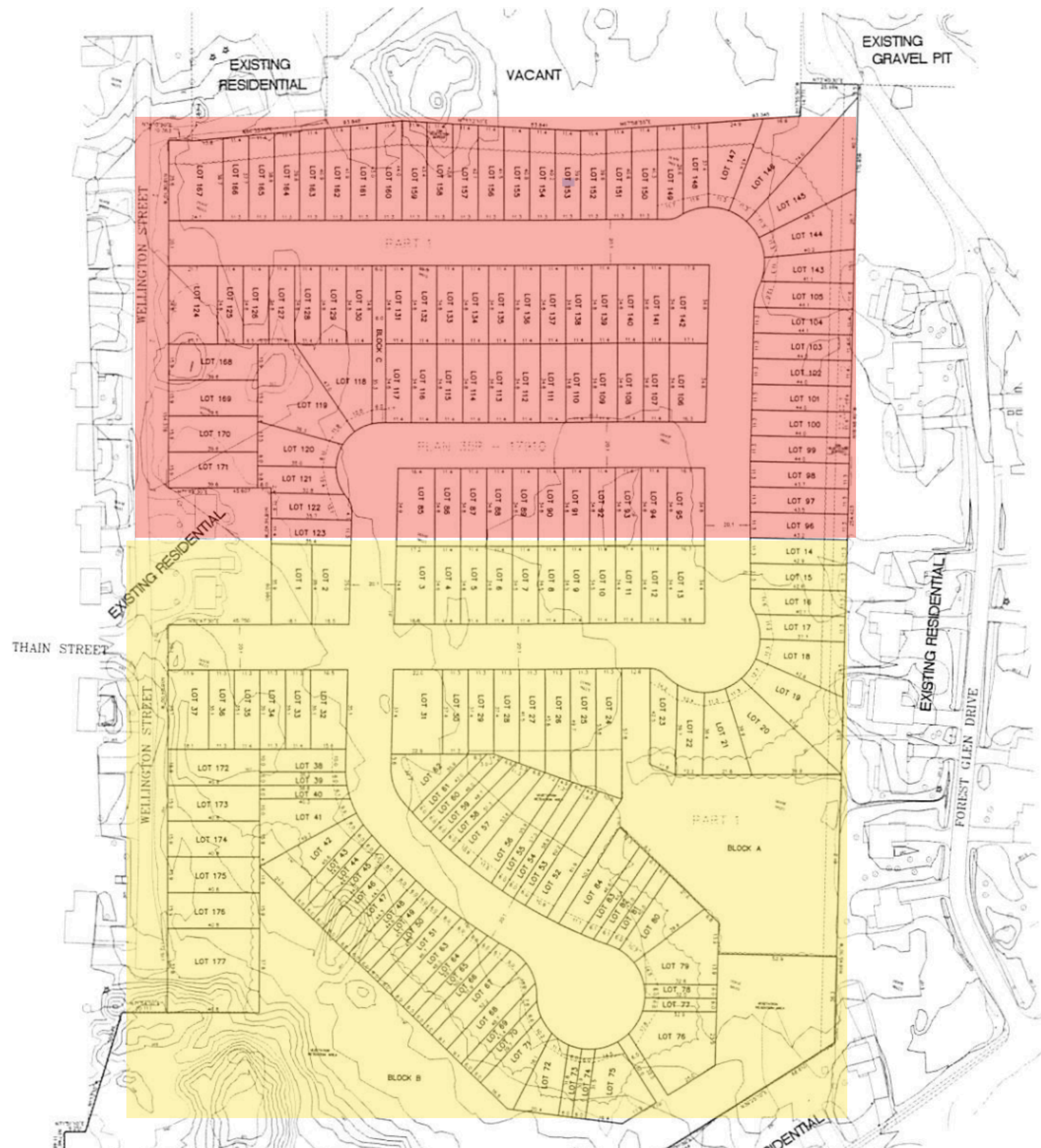
Average 1st Service Attendance @ Calvary

January 7th - March 17th

102

Average 1st Service Seats Filled In Sanctuary

(January 7th - March 17th)





the CEDARS

AT BRYDON BAY

PHASE 2

Legend

- 3RD RELEASE
- PREVIOUS RELEASE
- CHAIN LINK FENCE
- ACOUSTIC BARRIER
- WOOD FENCING
- SOLD



site plan

Site plan not to scale. Site plan provided for general information only. Mail boxes and bus pad locations are unavailable at this time. All details should be confirmed with sales representative and/or municipality. E.60.E.









Gravenhurst Is Growing

Problem #3

**We Are Not Truly Multi-Generational
At The Second Service**

“But as for you, teach what accords with sound doctrine. ² **Older men** are to be sober-minded, dignified, self-controlled, sound in faith, in love, and in steadfastness. ³ **Older women** likewise are to be reverent in behavior, not slanderers or slaves to much wine. They are to teach what is good, ⁴ and so train the **young women** to love their husbands and **children**, ⁵ to be self-controlled, pure, working at home, kind, and submissive to their own husbands, that the word of God may not be reviled. ⁶ Likewise, urge the **younger men** to be self-controlled... ¹³ waiting for our blessed hope, the appearing of the glory of our great God and Savior Jesus Christ, ¹⁴ who gave himself for us to redeem us from all lawlessness and to purify for himself a people for his own possession who are zealous for good works.

Titus 2:1-6, 13-14

3 Problems Facing Calvary

Recap

1. Our Children's Ministry Is Full
2. Our 1st Service Is Almost Full
3. Our 2nd Service Is Not Multigenerational

Idea's That Are Not A Fit For Us

1. Can We Go Back To One Service?

102

Average 1st Service Seats Filled In Sanctuary

(January 7th - March 17th)

62

Average 2nd Service Seats Filled In Sanctuary

(January 7th - March 17th)

164

Average Seats Filled In Sanctuary If We Went To One Service

211

Average Attendance @ Calvary

January 7th - March 17th

2. Can We Plant A Church?

The Vision

30 000 Ft

2 Multi-Generational Services With Kids Ministry

**What Will It Look Like
Practically?**

What Will 2 Multi Generational Services Look Like?

Overview

1. Kids Up In The Service For Announcements & Worship
2. Children's Ministry 3x Per Month (Nursery open & Toddler/Preschool class running on 4th Sunday - if we have volunteers)

Children's Ministry At 2 Services

Different Options Based On Volunteer Commitment

Minimum

- Nursery/Toddler
- Toddler/Preschool
- SK-Grade 3

Comprehensive

- Nursery
- Toddler
- Preschool
- Elementary

Optimal

- Nursery
- Toddler
- Preschool
- SK-Grade 2
- Grade 3 - Grade 5

We Stay As One Body

What Do We Need?

**1. We Need 8 Families To Make
The 11am Service Their Service**

Count The Cost

**1. We Need 8 Families To Make
The 11am Service Their Service**

**2. We Need A Minimum of 24 Children's
Ministry Volunteers @ Each Service
Committed To Serving Once A Month**

Children's Ministry Volunteers Needed

Minimum

Teachers - 7

Helpers - 13

Check In - 4

TOTAL: 24

Comprehensive

Teachers - 6

Helpers - 20

Check In - 4

TOTAL: 30

Optimal

Teachers - 13

Helpers - 19

Check In - 4

TOTAL: 36

Count The Cost

What Do We Need?

Recap

1. We Need 8 Families To Move To 11am
2. We Need A Minimum of 24 Children's Ministry Volunteers At Each Service

How Do I Commit To This Plan?

So What Is Next?

1. Pray

2. Count The Cost

3. Live Sacrificially

4. Meet Together

This Is So Exciting!