

# **Living As A Body: Practically**

**Luke 14:25-33, Romans 12:1, John 3:16-17, Mark 16:15**

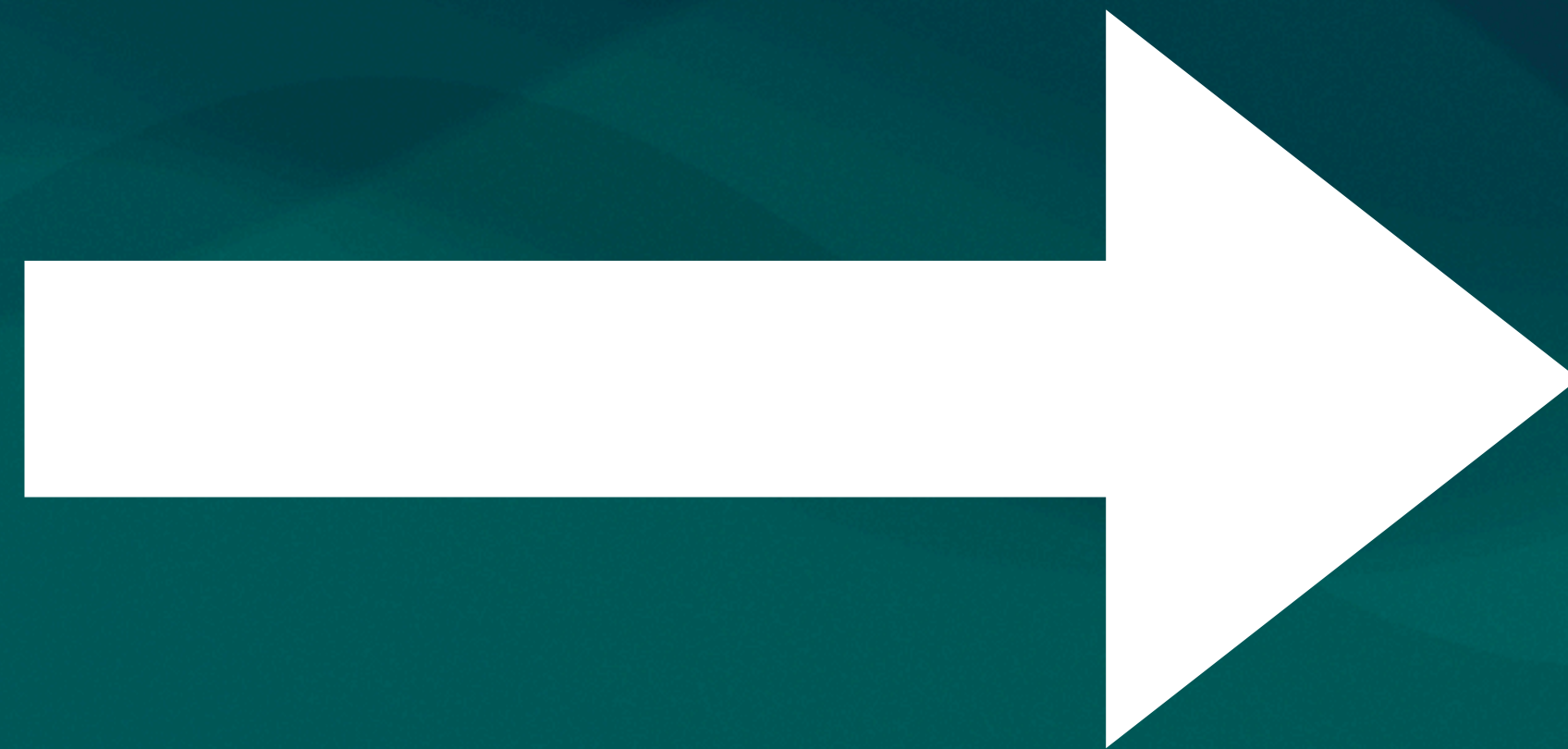


# Recap Of Our Series



# We Count The Cost Of Following Jesus

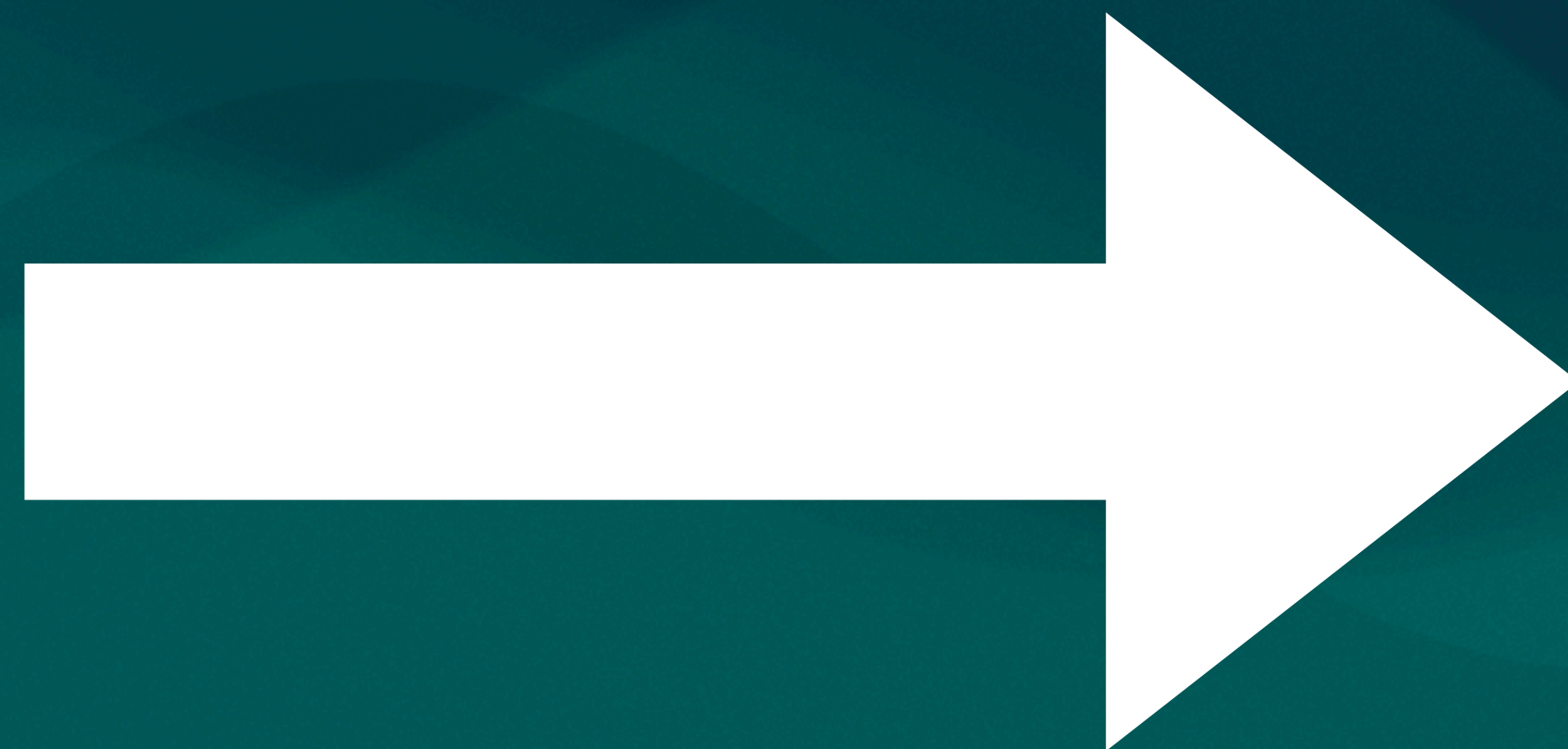
Luke 14:25-33





# We Live Sacrificially In The Church

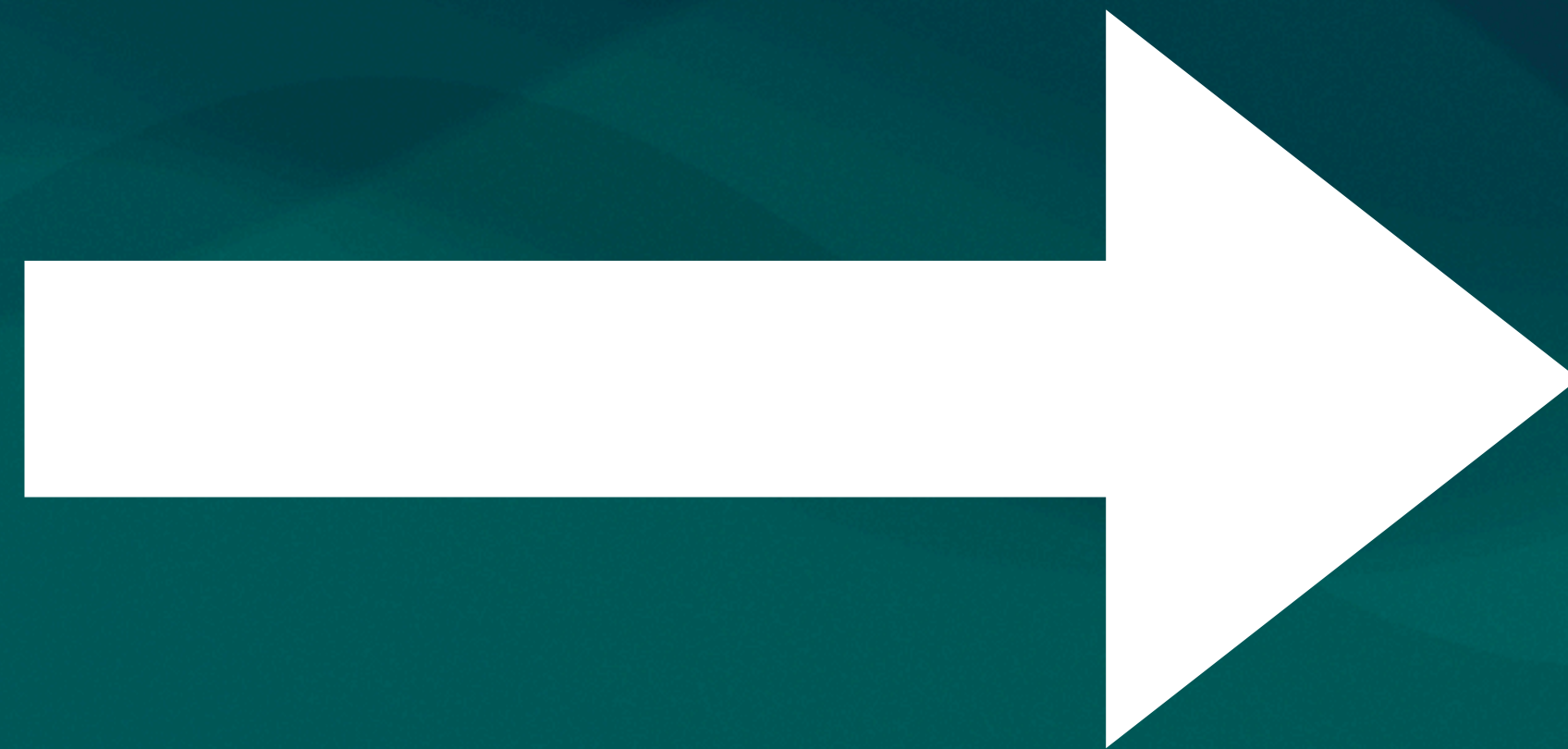
Romans 12:1





# We Want To Love The World Like God Does

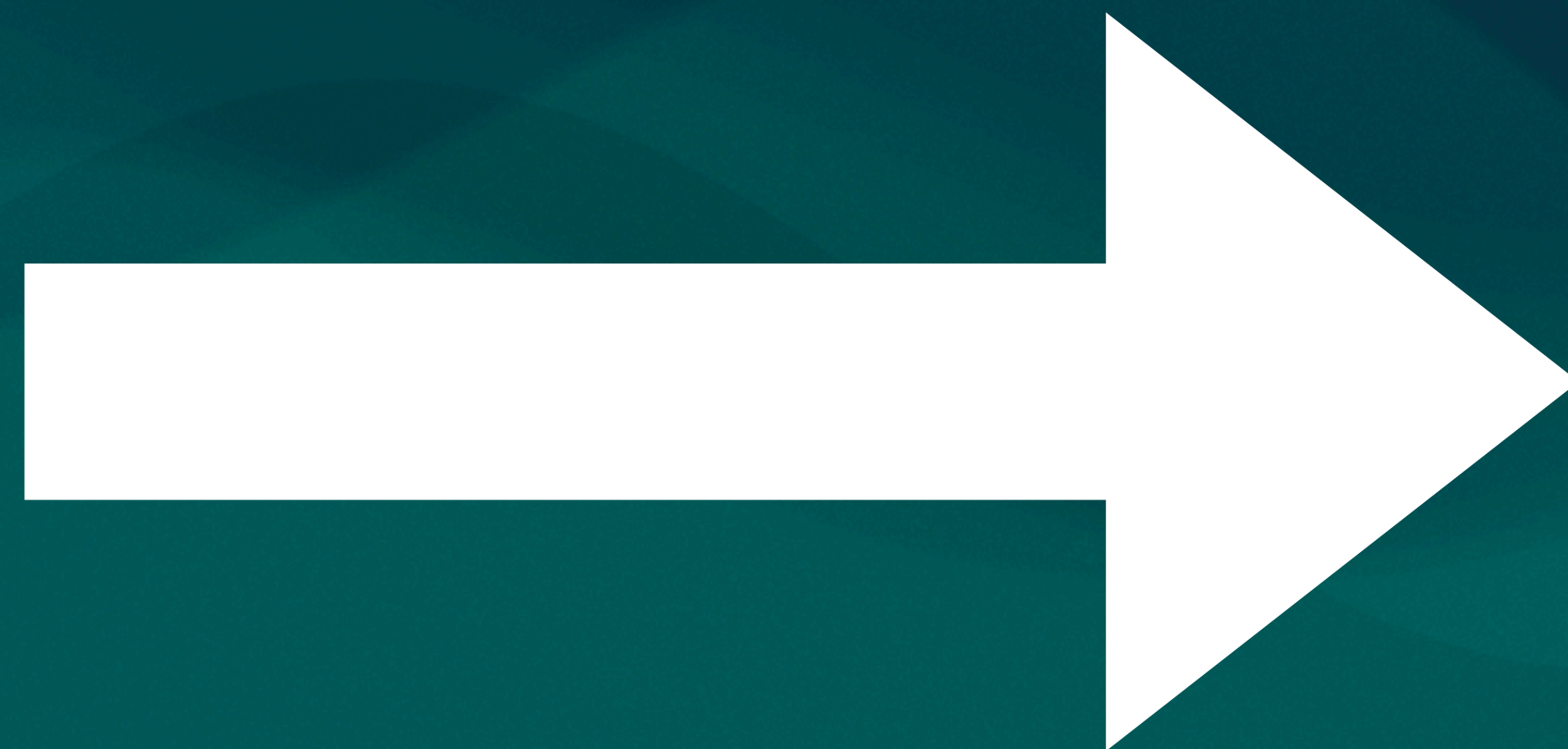
John 3:16-17





# This Compels Us To Preach The Gospel

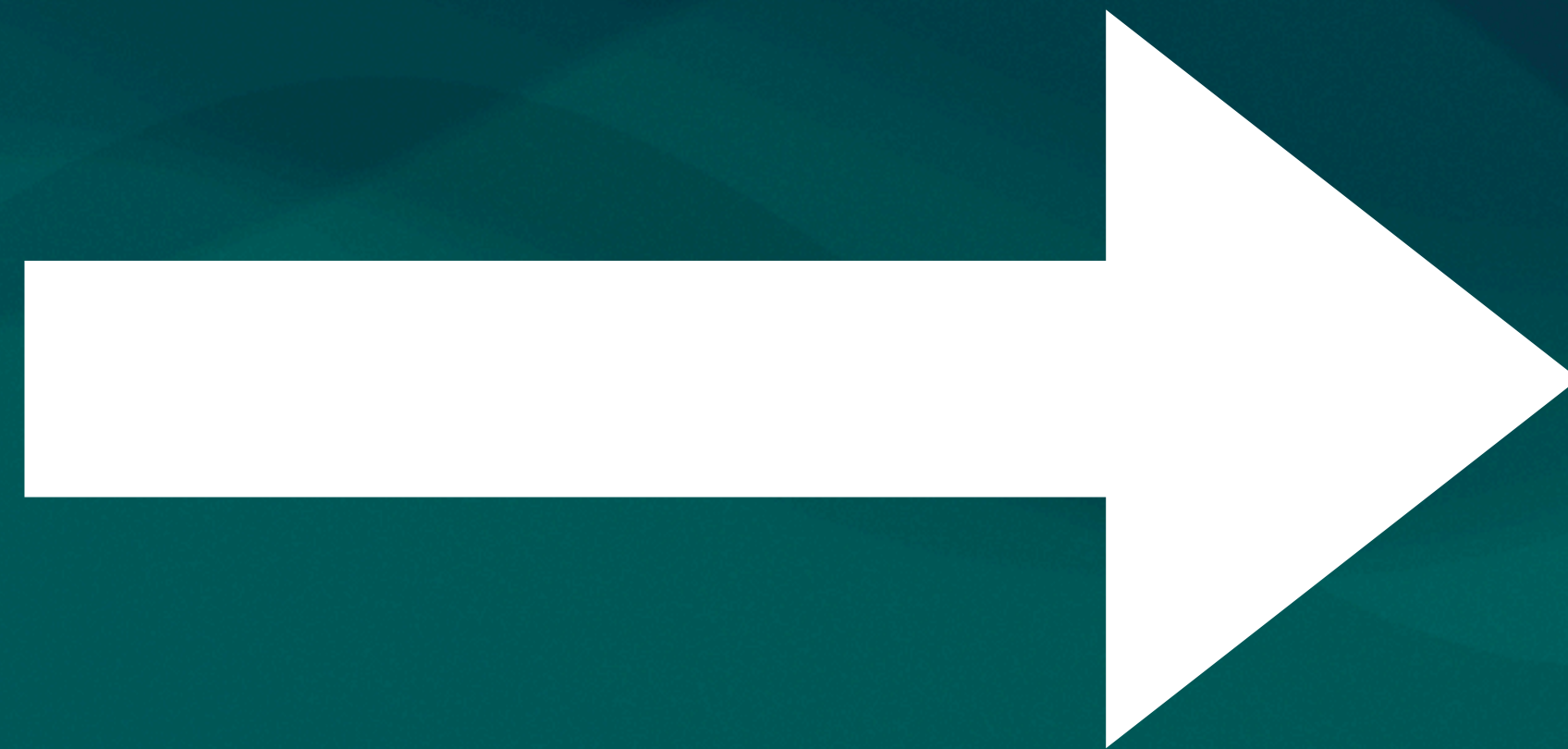
Mark 16:15





# God Works, People Are Saved

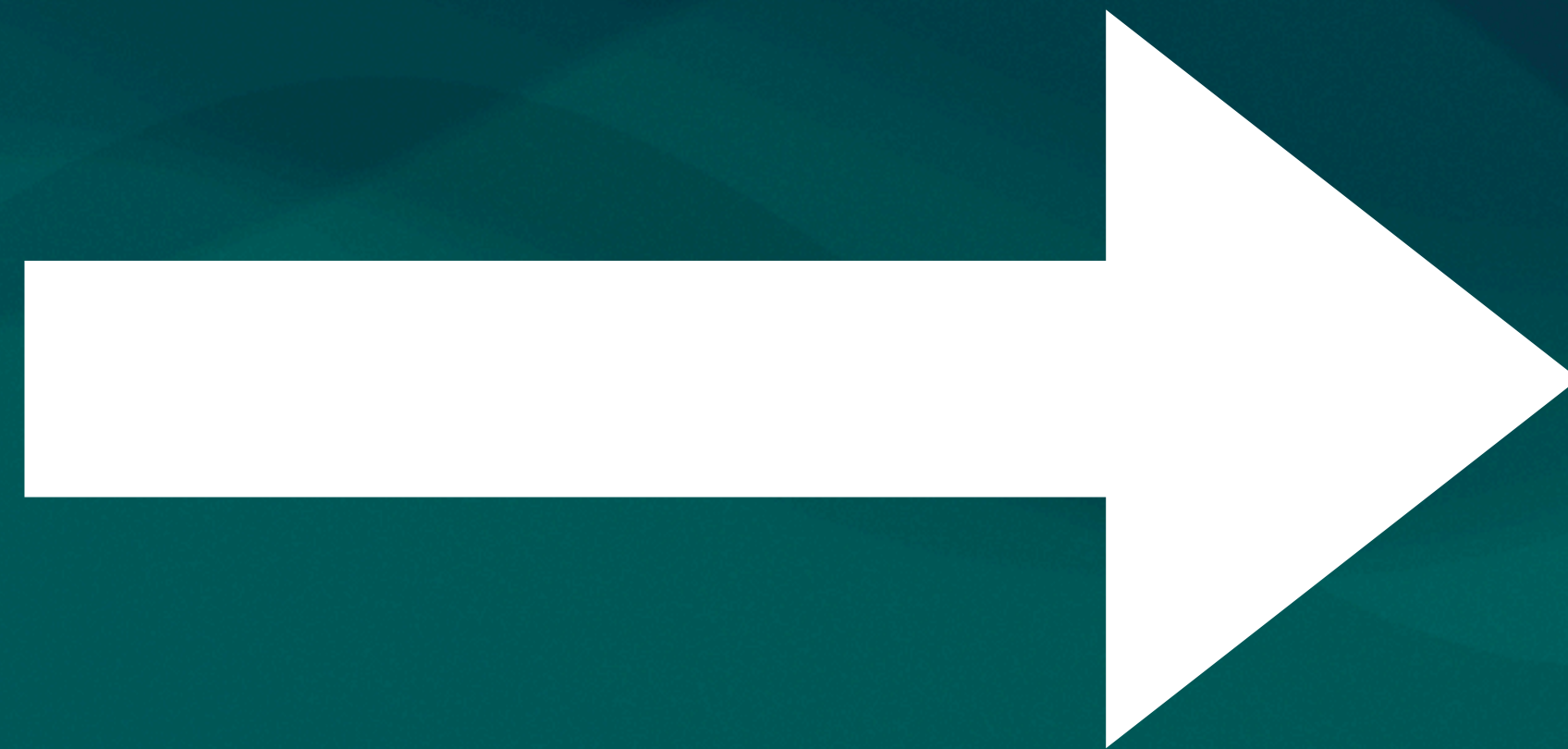
Ephesians 2:8-9





# They Are Added To The Church & Disciplined

Matthew 28:19-20, Acts 2:40-41





**God Is At Work!**



**This Has Created THE BEST  
Problems**



# Problem #1



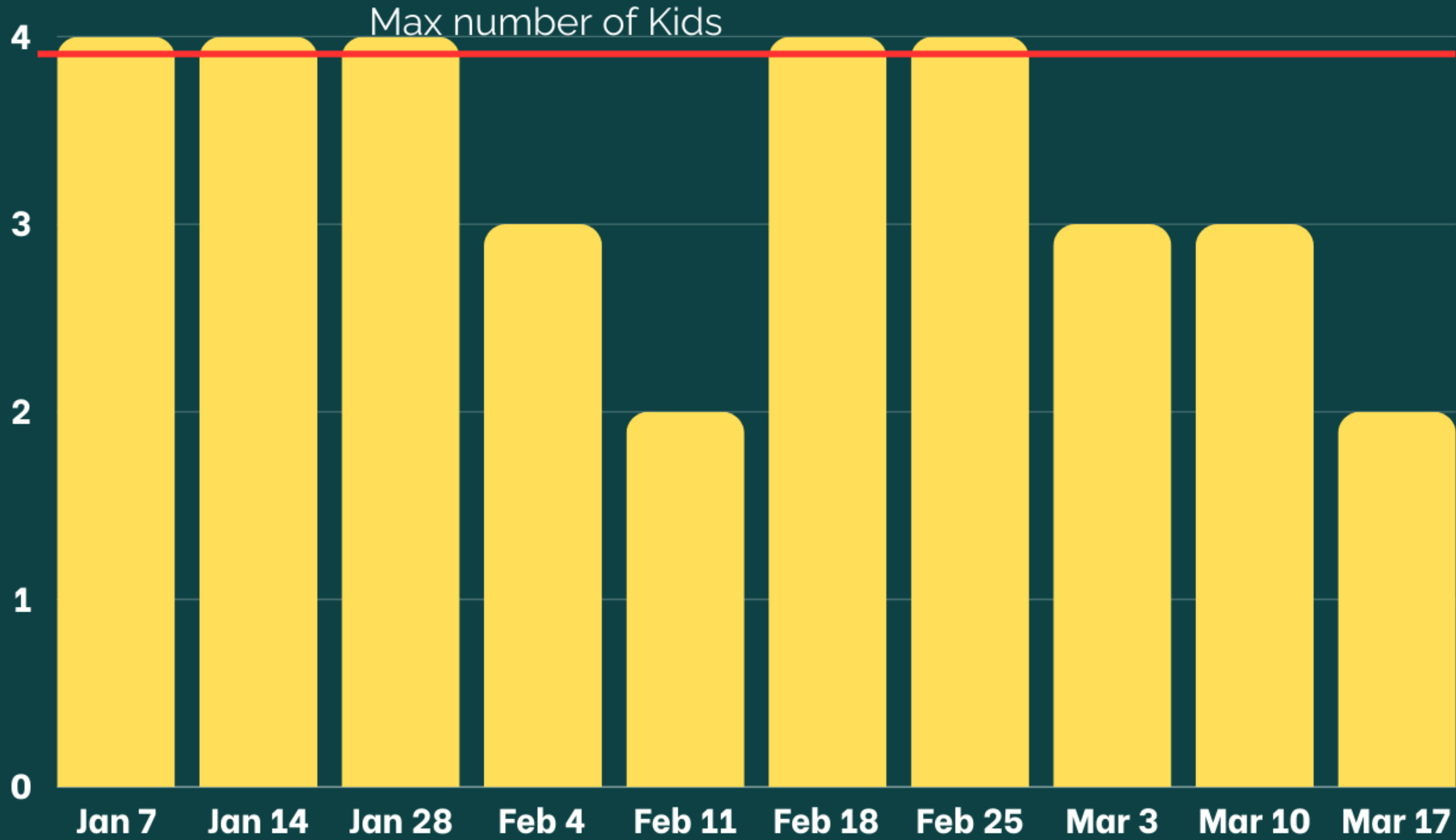
**Our Children's Ministry Is Full**



**Close To Full =  
Not Much Room To Grow**

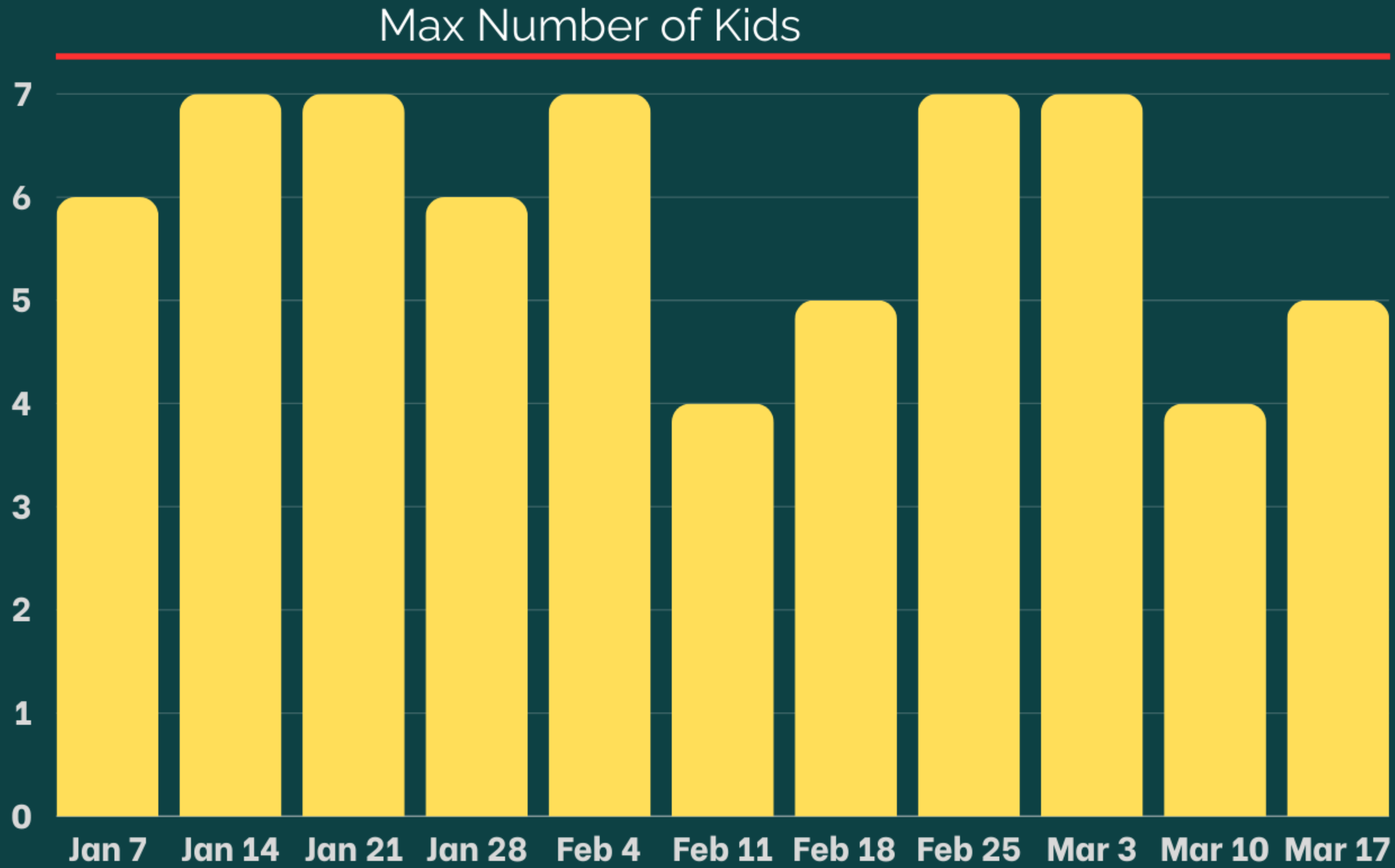


# Children in Nursery





# Children in Toddler's Classroom

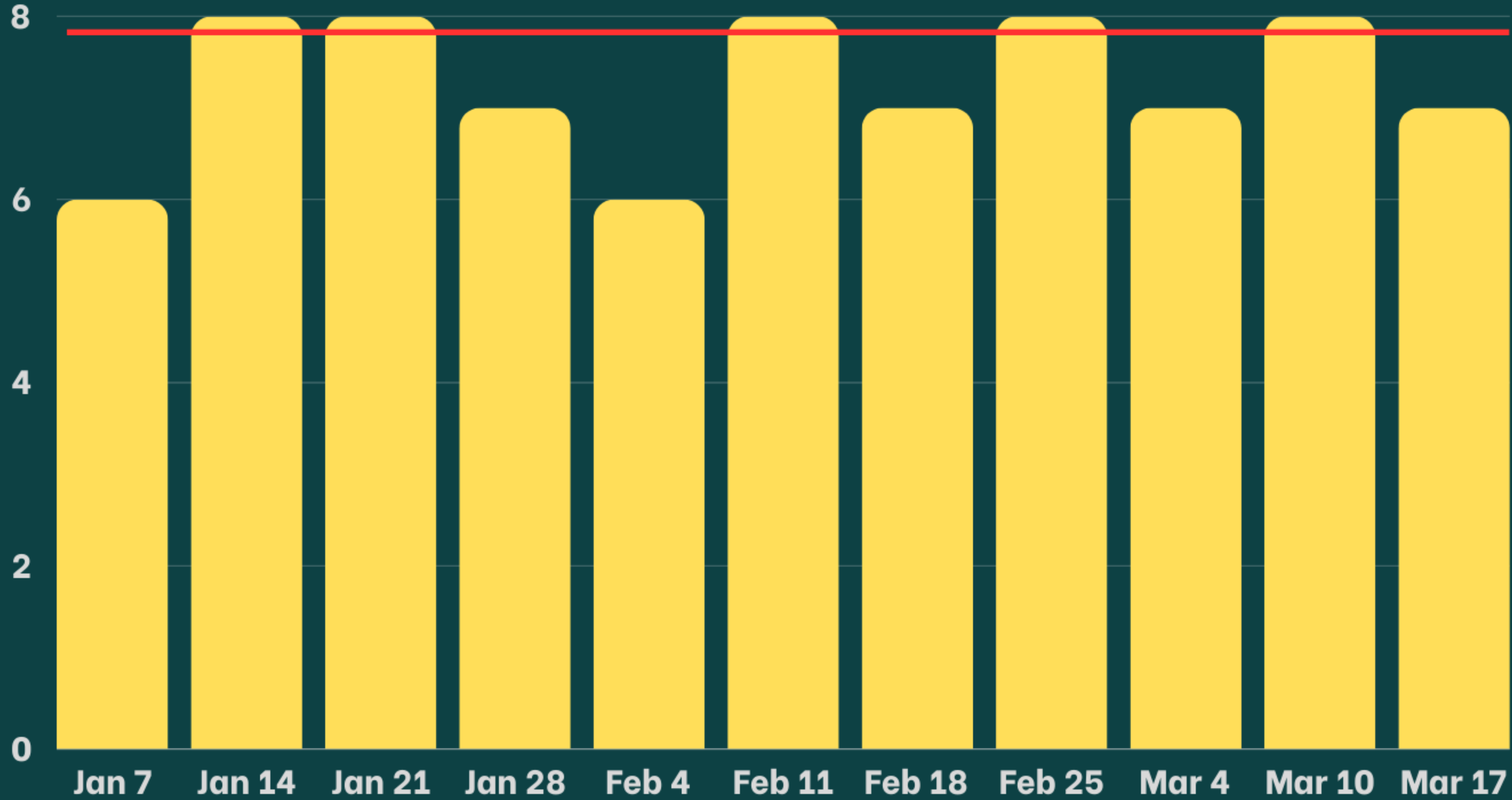




# Children in Preschool Classroom

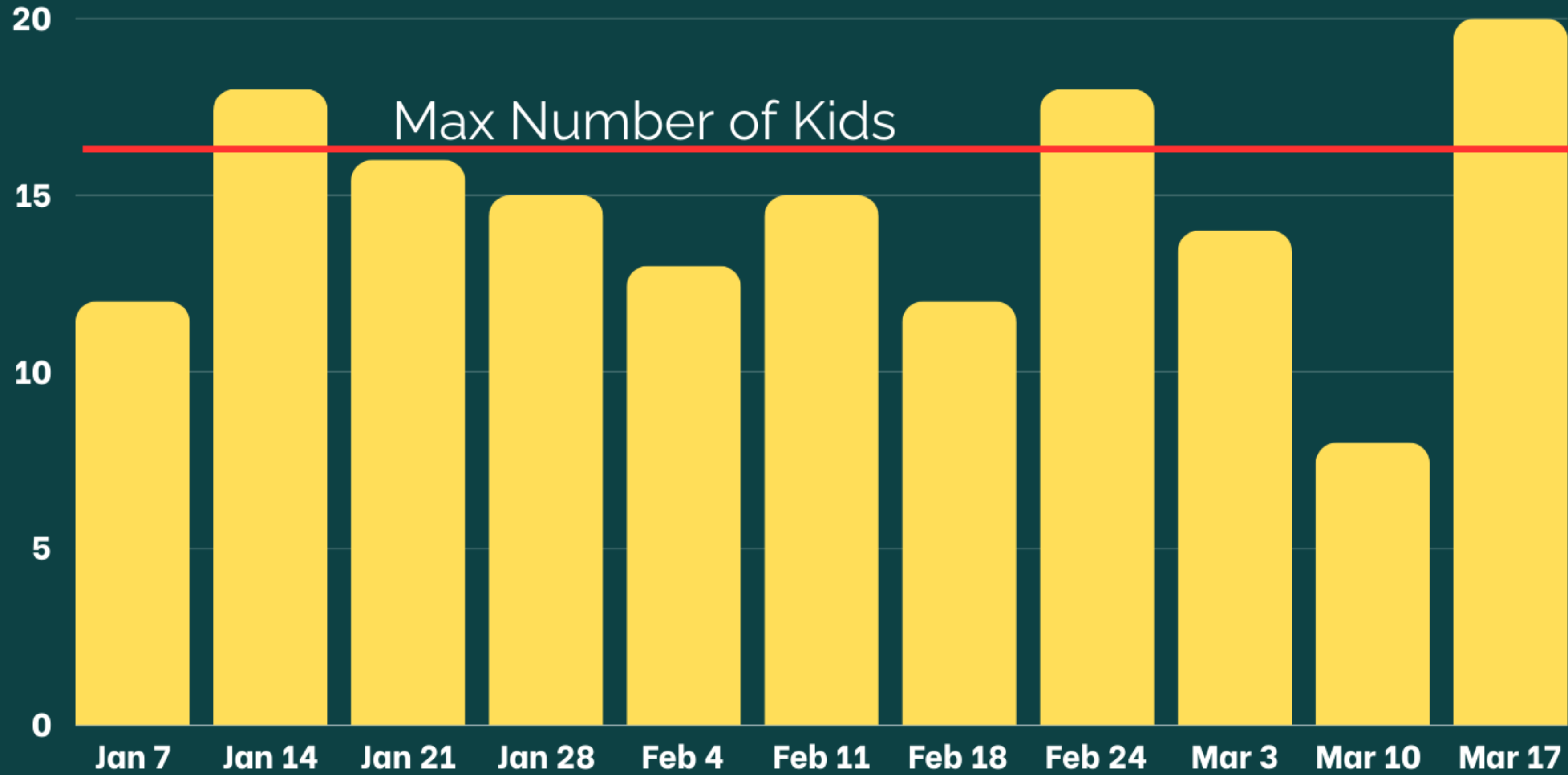


Max Number of Kids



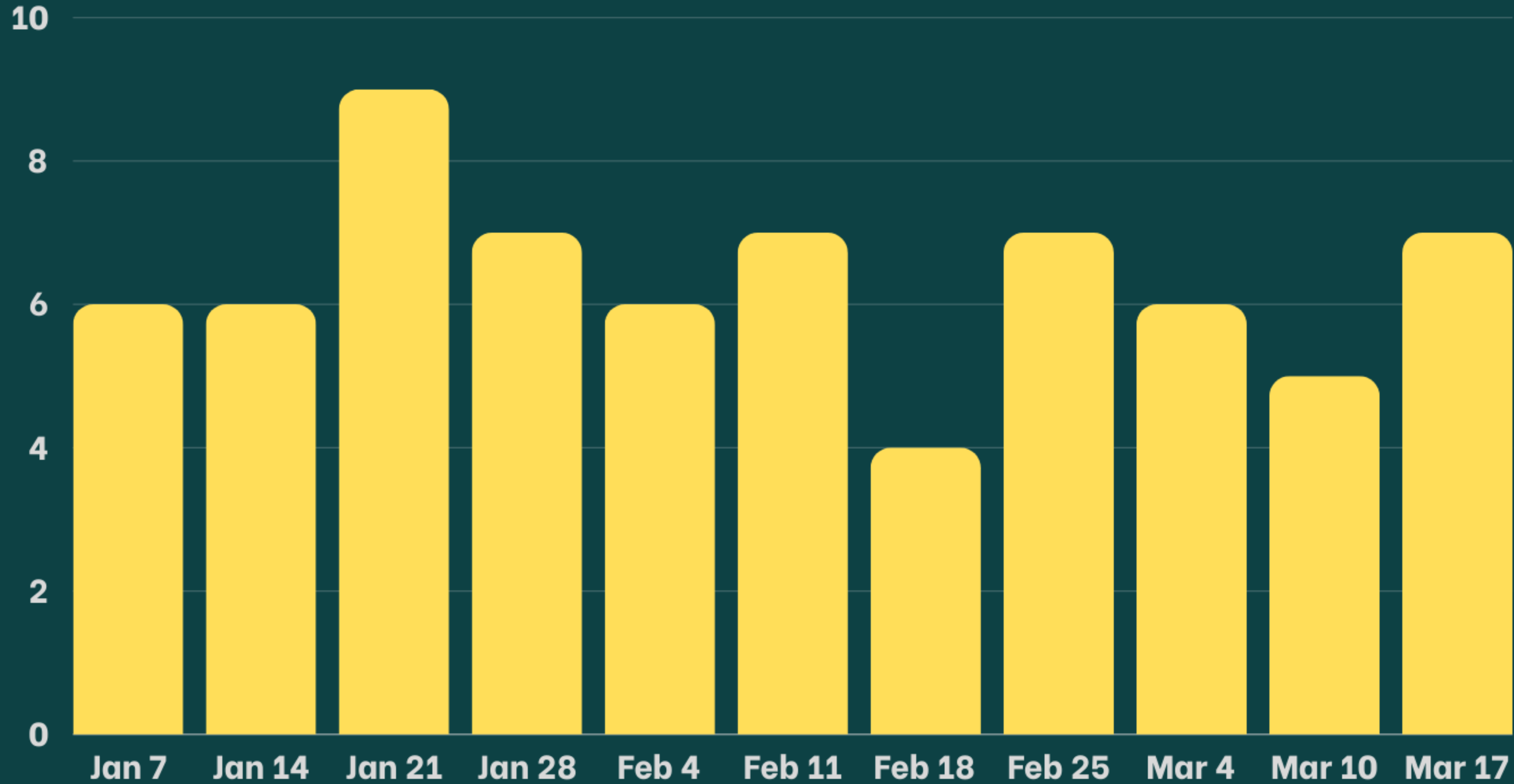


# Number of Kids in SK-Grade 2 Classroom





# Number of Kids in Grade 3-5 Classroom





# Problem #2



**Our 1st Service Is Approaching  
Full**



**151**

**Average 1st Service Attendance @ Calvary**

**January 7th - March 17th**

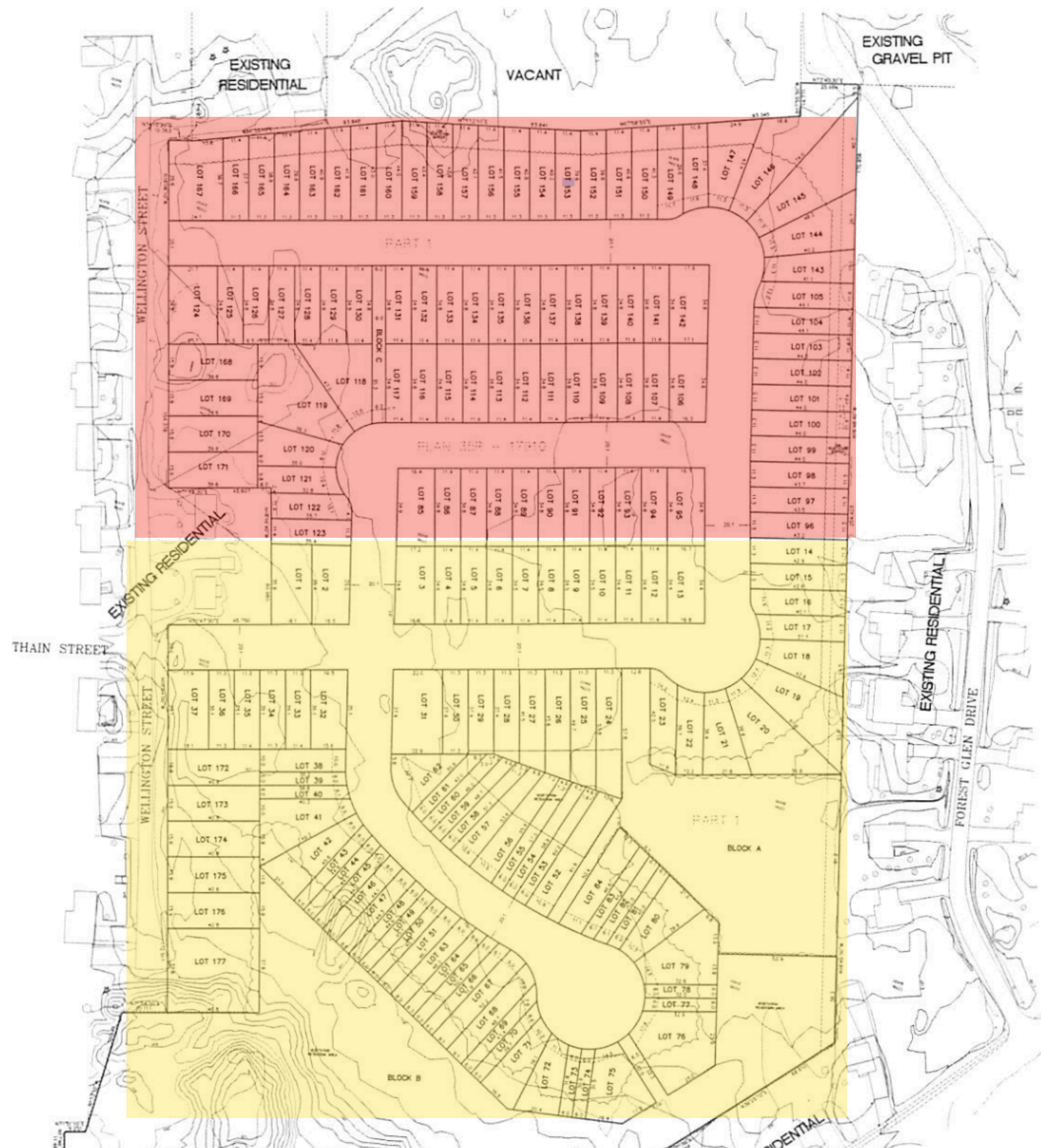


# 102

**Average 1st Service Seats Filled In Sanctuary**

**(January 7th - March 17th)**





EXISTING RESIDENTIAL

VACANT

EXISTING GRAVEL PIT

WELLINGTON STREET

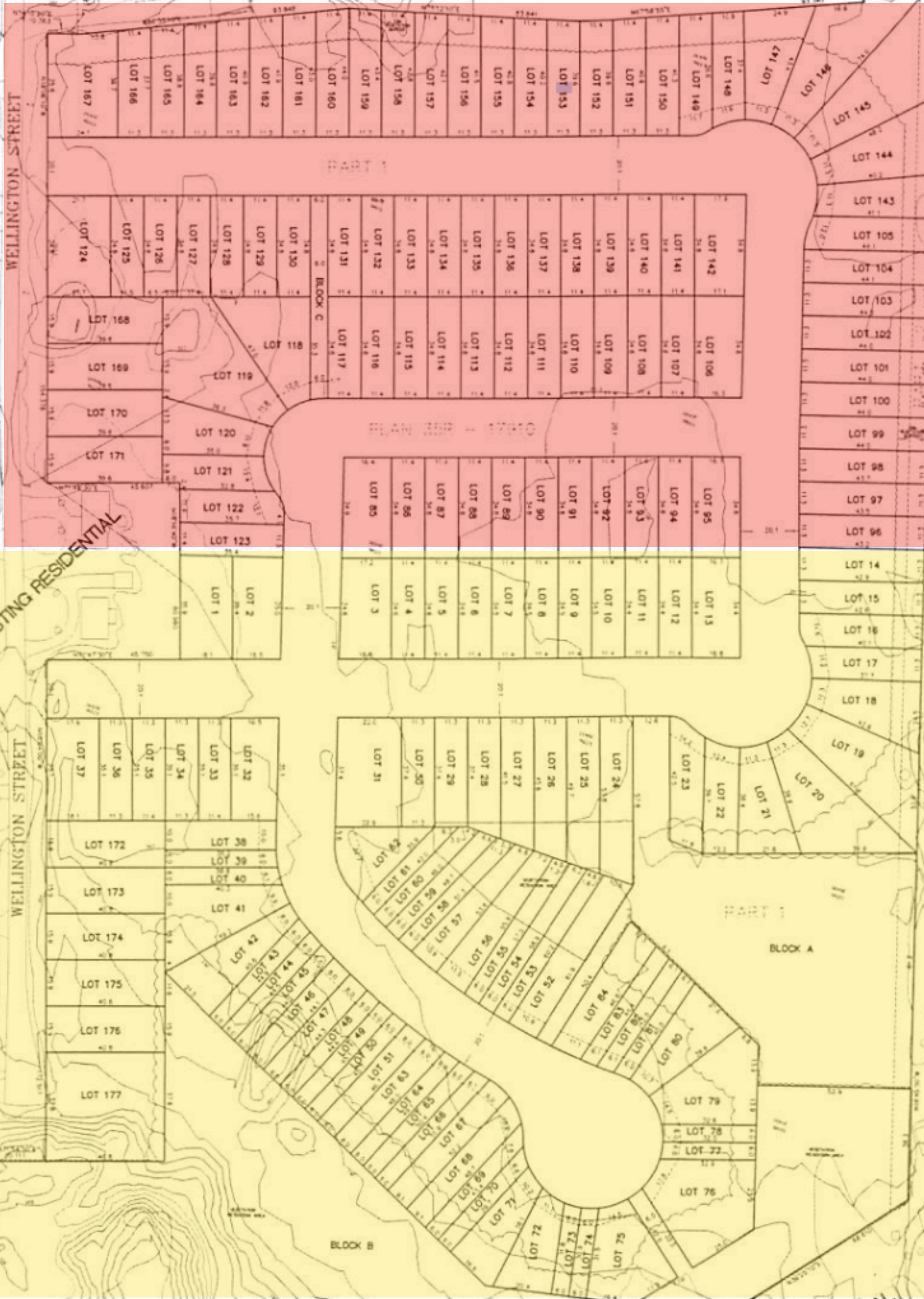
THAIN STREET

EXISTING RESIDENTIAL

FOREST GLEN DRIVE

EXISTING RESIDENTIAL

RESIDENTIAL







# the CEDARS

AT BRYDON BAY

## PHASE 2

### Legend

- 3RD RELEASE
- PREVIOUS RELEASE
- CHAIN LINK FENCE
- ACOUSTIC BARRIER
- WOOD FENCING
- SOLD



site plan

EXISTING RESIDENTIAL

EXISTING RESIDENTIAL



Site plan not to scale. Site plan provided for general information only. Mail boxes and bus pad locations are unavailable at this time. All details should be confirmed with sales representative and/or municipality. E.60.E.

















**Gravenhurst Is Growing**



# Problem #3



**We Are Not Truly Multi-Generational  
At The Second Service**



“But as for you, teach what accords with sound doctrine. <sup>2</sup> **Older men** are to be sober-minded, dignified, self-controlled, sound in faith, in love, and in steadfastness. <sup>3</sup> **Older women** likewise are to be reverent in behavior, not slanderers or slaves to much wine. They are to teach what is good, <sup>4</sup> and so train the **young women** to love their husbands and **children**, <sup>5</sup> to be self-controlled, pure, working at home, kind, and submissive to their own husbands, that the word of God may not be reviled. <sup>6</sup> Likewise, urge the **younger men** to be self-controlled... <sup>13</sup> waiting for our blessed hope, the appearing of the glory of our great God and Savior Jesus Christ, <sup>14</sup> who gave himself for us to redeem us from all lawlessness and to purify for himself a people for his own possession who are zealous for good works.

Titus 2:1-6, 13-14



# 3 Problems Facing Calvary

## Recap

1. Our Children's Ministry Is Full
2. Our 1st Service Is Almost Full
3. Our 2nd Service Is Not Multigenerational



**Idea's That Are Not A Fit For Us**



**1. Can We Go Back To One Service?**



# 102

**Average 1st Service Seats Filled In Sanctuary**

**(January 7th - March 17th)**



**62**

**Average 2nd Service Seats Filled In Sanctuary**

**(January 7th - March 17th)**



**164**

**Average Seats Filled In Sanctuary If We Went To One Service**



**211**

**Average Attendance @ Calvary**

**January 7th - March 17th**



## 2. Can We Plant A Church?



# The Vision



**30 000 Ft**



# 2 Multi-Generational Services With Kids Ministry



**What Will It Look Like  
Practically?**



# What Will 2 Multi Generational Services Look Like?

## Overview

1. Kids Up In The Service For Announcements & Worship
2. Children's Ministry 3x Per Month (Nursery open & Toddler/Preschool class running on 4th Sunday - if we have volunteers)



# Children's Ministry At 2 Services

## Different Options Based On Volunteer Commitment

### Minimum

- Nursery/Toddler
- Toddler/Preschool
- SK-Grade 3

### Comprehensive

- Nursery
- Toddler
- Preschool
- Elementary

### Optimal

- Nursery
- Toddler
- Preschool
- SK-Grade 2
- Grade 3 - Grade 5



**We Stay As One Body**



**What Do We Need?**



**1. We Need 8 Families To Make  
The 11am Service Their Service**



Count The Cost



**1. We Need 8 Families To Make  
The 11am Service Their Service**



**2. We Need A Minimum of 24 Children's  
Ministry Volunteers @ Each Service  
Committed To Serving Once A Month**



# Children's Ministry Volunteers Needed

## Minimum

Teachers - 7

Helpers - 13

Check In - 4

TOTAL: 24

## Comprehensive

Teachers - 6

Helpers - 20

Check In - 4

TOTAL: 30

## Optimal

Teachers - 13

Helpers - 19

Check In - 4

TOTAL: 36



Count The Cost



# What Do We Need?

## Recap

1. We Need 8 Families To Move To 11am
2. We Need A Minimum of 24 Children's Ministry Volunteers At Each Service



**How Do I Commit To This Plan?**



**So What Is Next?**



# 1. Pray



## 2. Count The Cost



# 3. Live Sacrificially



# 4. Meet Together



**This Is So Exciting!**